

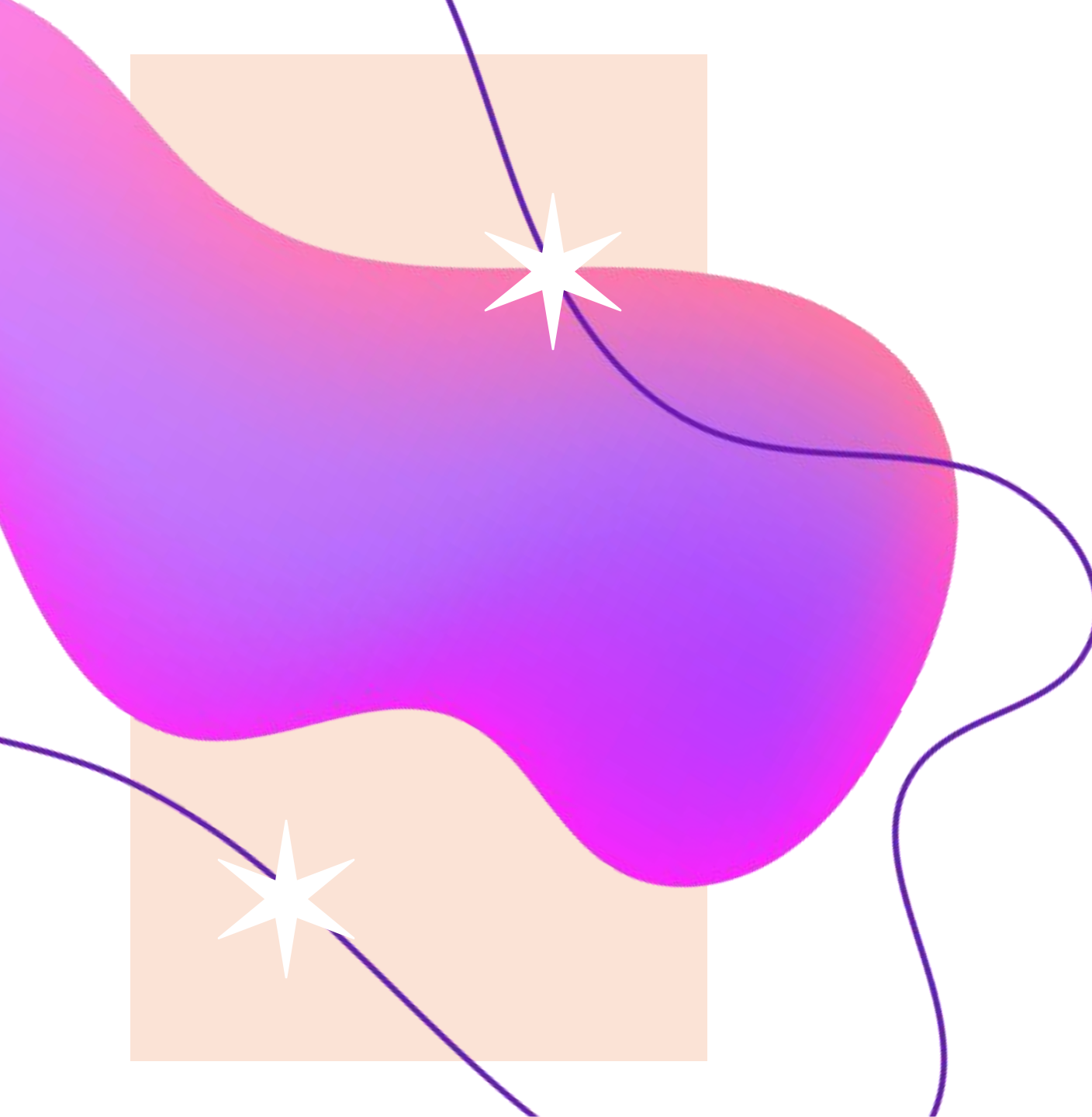
Long-Term Plan

At Ysgol Frongoch we follow 'Whole School Cross-Curricular Topics'. We have devised a 4-year cycle to ensure that, during their time with us, no child repeats a topic.

Year	Term		
	Autumn	Spring	Summer
1	Express Yourself	Carnival	Adventure Awaits
2	Global Explorers	Pioneers and Innovators	Game on
3	Wild about learning	Time Travel	Live together, play together
4	Around the World	Cynefin and Belonging	Elevate

For each term there will be a 'Driving' AOLE which will be the main focus for the topic followed by 2 Sub-AOLEs to consider.

Autumn		Spring		Summer	
<b>Humanities</b> <i>(Geographical)</i>		<b>Science and Technology</b>		<b>Expressive Arts</b>	
<b>Science and Technology</b>	<b>Health &amp; Wellbeing</b>	<b>Humanities</b> <i>(Historical)</i>	<b>Expressive Arts</b>	<b>Science and Technology</b>	<b>Health &amp; Wellbeing</b>
<b>Languages, Literacy and Communication</b> <b>Mathematics and Numeracy</b>					



Medium-Term Plan

# Year 1 Cycle

Autumn	Spring	Summer
Express Yourself	Carnival	Adventure Awaits
<p><b>Humanities – WM4</b> – <i>Human societies are complex &amp; diverse &amp; shaped by human actions &amp; beliefs.</i></p> <p><b>WM5</b> – <i>Informed self-aware citizens engage with the challenges &amp; opportunities that face humanity &amp; are able to take considered &amp; ethical action.</i></p> <p><b>Science &amp; Technology – WM1</b> – <i>Being curious &amp; searching for answers is essential to understanding &amp; predicting phenomena</i></p> <p><b>Health &amp; Wellbeing – WM2</b> – <i>How we process &amp; respond to our experiences affects our mental health &amp; emotional wellbeing.</i></p>	<p><b>Science &amp; Technology</b></p> <p><b>WM4</b> – <i>Matter and the way it behaves defines our universe &amp; shapes our lives.</i></p> <p><b>WM5</b> – <i>Forces &amp; energy provide a foundation for understanding our universe.</i></p> <p><b>Humanities – WM2</b> – <i>Events &amp; human experiences are complex &amp; are perceived, interpreted &amp; represented in different ways.</i></p> <p><b>Expressive Art – WM2</b> – <i>Responding &amp; reflecting, both as an artist &amp; audience, is a fundamental part of learning in the Expressive Arts</i></p>	<p><b>Expressive Arts – WM1</b> – <i>Exploring the expressive arts is essential to developing artistic skills &amp; knowledge &amp; it enables learners to become curious &amp; creative individuals.</i></p> <p><b>WM3</b> – <i>Creating combines skills &amp; knowledge, drawing on the senses, inspiration &amp; imagination.</i></p> <p><b>Science &amp; Technology – WM2</b> – <i>Design thinking &amp; engineering offer technical &amp; creative ways to meet society's needs &amp; wants.</i></p> <p><b>Health &amp; Wellbeing – WM1</b> – <i>Developing physical health &amp; wellbeing has lifelong benefits.</i></p>

# Year 2 Cycle

Autumn	Spring	Summer
Wild about learning	Pioneers & Innovators	Game on
<p><b>Humanities – WM3</b> <i>Our natural world is diverse &amp; dynamic, influenced by processes &amp; human actions.</i></p> <p><b>WM5</b> – <i>Informed self-aware citizens engage with the challenges &amp; opportunities that face humanity &amp; are able to take considered and ethical action.</i></p> <p><b>Science &amp; Technology – WM 3</b> – <i>The world around us is full of living things which depend on each other for survival</i></p> <p><b>Health &amp; Wellbeing – WM3</b> – <i>Our decision-making impacts on the quality of our lives and the lives of others.</i></p>	<p><b>Science &amp; Technology – WM2</b> – <i>Design thinking &amp; engineering offer technical &amp; creative ways to meet society's needs &amp; wants.</i></p> <p><b>WM6</b> – <i>Computation is the foundation for our digital world.</i></p> <p><b>Humanities – WM1</b> – <i>Enquiry, exploration &amp; investigation inspires curiosity about the world it's past, present and future.</i></p> <p><b>Expressive Arts – WM1</b> – <i>Exploring the expressive arts is essential to developing artistic skills &amp; knowledge &amp; it enables learners to become curious &amp; creative individuals.</i></p>	<p><b>Expressive Art – WM2</b> – <i>Responding &amp; reflecting, both as an artist &amp; audience, is a fundamental part of learning in the Expressive Arts</i></p> <p><b>WM3</b> – <i>Creating combines skills &amp; knowledge, drawing on the senses, inspiration &amp; imagination.</i></p> <p><b>Science &amp; Technology – WM5</b> – <i>Forces &amp; energy provide a foundation for understanding our universe.</i></p> <p><b>Health &amp; Wellbeing – WM4</b> – <i>How we engage with social influences shapes who we are &amp; affects our health &amp; wellbeing</i></p> <p><b>WM5</b> – <i>Healthy relationships are fundamental to our wellbeing.</i></p>

# Year 3 Cycle

Autumn	Spring	Summer
Global Explorers	Time Travel	Live together, play together
<p><b>Humanities – WM4</b> – <i>Human societies are complex &amp; diverse &amp; shaped by human actions &amp; beliefs.</i></p> <p><b>WM5</b> – <i>Informed self-aware citizens engage with the challenges &amp; opportunities that face humanity &amp; are able to take considered &amp; ethical action.</i></p> <p><b>Science &amp; Technology – WM1</b> – <i>Being curious &amp; searching for answers is essential to understanding &amp; predicting phenomena</i></p> <p><b>Health &amp; Wellbeing – WM2</b> – <i>How we process &amp; respond to our experiences affects our mental health &amp; emotional wellbeing.</i></p>	<p><b>Science &amp; Technology</b></p> <p><b>WM4</b> – <i>Matter and the way it behaves defines our universe &amp; shapes our lives.</i></p> <p><b>WM5</b> – <i>Forces &amp; energy provide a foundation for understanding our universe.</i></p> <p><b>Humanities – WM2</b> – <i>Events &amp; human experiences are complex &amp; are perceived, interpreted &amp; represented in different ways.</i></p> <p><b>Expressive Arts – WM2</b> – <i>Responding &amp; reflecting, both as an artist &amp; audience, is a fundamental part of learning in the Expressive Arts.</i></p>	<p><b>Expressive Arts – WM1</b> – <i>Exploring the expressive arts is essential to developing artistic skills &amp; knowledge &amp; it enables learners to become curious &amp; creative individuals.</i></p> <p><b>WM3</b> – <i>Creating combines skills &amp; knowledge, drawing on the senses, inspiration &amp; imagination</i></p> <p><b>Science &amp; Technology – WM2</b> – <i>Design thinking &amp; engineering offer technical &amp; creative ways to meet society's needs &amp; wants.</i></p> <p><b>Health &amp; Wellbeing – WM1</b> – <i>Developing physical health &amp; wellbeing has lifelong benefits.</i></p>

# Year 4 Cycle

Autumn	Spring	Summer
Around the World	Cynefin and Belonging	Elevate
<p><b>Humanities – WM3</b> <i>Our natural world is diverse &amp; dynamic, influenced by processes &amp; human actions.</i></p> <p><b>WM5</b> – <i>Informed self-aware citizens engage with the challenges &amp; opportunities that face humanity &amp; are able to take considered and ethical action.</i></p> <p><b>Science &amp; Technology – WM 3</b> – <i>The world around us is full of living things which depend on each other for survival</i></p> <p><b>Health &amp; Wellbeing – WM3</b> – <i>Our decision-making impacts on the quality of our lives and the lives of others.</i></p>	<p><b>Science &amp; Technology – WM2</b> – <i>Design thinking &amp; engineering offer technical &amp; creative ways to meet society's needs &amp; wants.</i></p> <p><b>WM6</b> – <i>Computation is the foundation for our digital world.</i></p> <p><b>Humanities – WM1</b> – <i>Enquiry, exploration &amp; investigation inspires curiosity about the world it's past, present and future.</i></p> <p><b>Expressive Arts – WM1</b> – <i>Exploring the expressive arts is essential to developing artistic skills &amp; knowledge &amp; it enables learners to become curious &amp; creative individuals.</i></p>	<p><b>Expressive Art – WM2</b> – <i>Responding &amp; reflecting, both as an artist &amp; audience, is a fundamental part of learning in the Expressive Arts</i></p> <p><b>WM3</b> – <i>Creating combines skills &amp; knowledge, drawing on the senses, inspiration &amp; imagination.</i></p> <p><b>Science &amp; Technology – WM5</b> – <i>Forces &amp; energy provide a foundation for understanding our universe.</i></p> <p><b>WM4</b> – <i>How we engage with social influences shapes who we are &amp; affects our health &amp; wellbeing</i></p> <p><b>WM5</b> – <i>Healthy relationships are fundamental to our wellbeing.</i></p>